



A Connecticut Classic This Southport estate, with distance views to the Manhattan skyline, lists for \$7.5 million with the AFA Team, affiliated with William Raveis in Southport. 203-258-1595

reception rotunda, leading to a great room with an elegant fireplace and a formal library, with easy access to expansive outdoor terraces. In all, there are seven ensuite bedrooms, including a luxurious main-floor primary suite. It's offered by Ellen Mosher of Houlihan Lawrence.

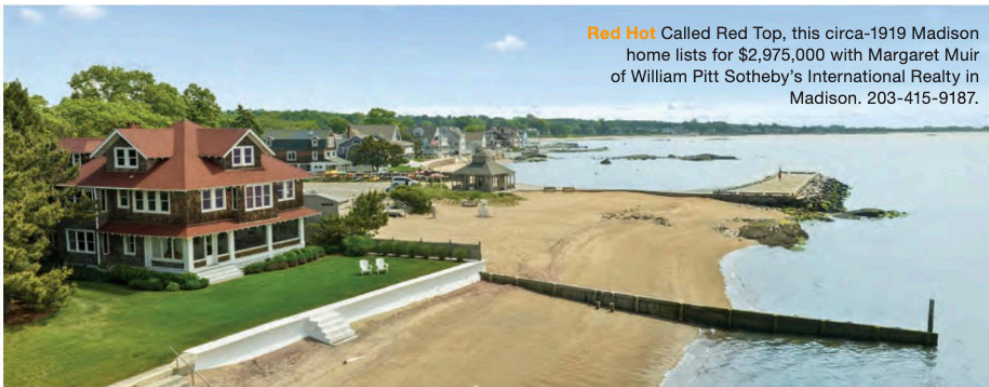
A CLASSIC COLONIAL

ON THE WATERFRONT IN SOUTHPORT, IS AN 11,000-square-foot home, listed for \$75 million. It takes pride of place on a private road along Southport Harbor and offers unbroken views over Long Island Sound and, in the distance, the Manhattan skyline. Better still, the two-acre property features 200 feet of private shoreline, as well as an oversized pool and terrace. The grand front doors open onto a foyer with double-height ceilings and double staircases. Customized amenities include a dining hall with a fireplace, a wine room, and a billiards room. And there is a total of seven bedrooms, including

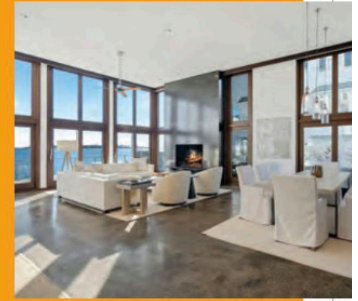
a pretty primary suite. It lists with the AFA Team, affiliated with William Raveis.

SHINGLE STYLE BY THE SEA

NEW ENGLAND'S MOST ICONIC SHINGLE STYLE estates sit atop bluffs and along beaches to take advantage of ocean views. And a circa-1919 Madison property—newly listed for \$2,975,000—is no exception, sited on Middle Beach Road, a few steps down to a private sandy beach. Called Red Top, the home features the vernacular's classic back porch, running the entire width of the house, at 36 feet. The 5,075-foot-interiors were designed to take in water views from every room, especially from the second-floor family room. The updated kitchen was also built to accommodate family fun—and meals—with its generous island, Sub-Zero fridge, wine bar and two dishwashers. It lists with Margaret Muir of William Pitt Sotheby's International Realty.—*Diane di Costanzo*



Red Hot Called Red Top, this circa-1919 Madison home lists for \$2,975,000 with Margaret Muir of William Pitt Sotheby's International Realty in Madison. 203-415-9187.



A SOUND INVESTMENT

A circa-2002 Rowayton home was constructed to take in stunning views over Long Island Sound—notably picturesque Sheffield Island and its iconic lighthouse. Architect Bruce Beinfield, who has built award-winning houses all over this waterfront town, incorporated traditional motifs when designing the structure, including a stone foundation and cedar-shingled exteriors, crowned by a windowed cupola. But the 4,585-square-foot interiors are strikingly modern, especially the great room, with its 18-foot-high window walls and handsome, floor-to-ceiling hearth. In the primary suite, there's another fireplace wall, as well as two bathrooms and a posh dressing room. It's offered for \$4,395,000 by Bruce Baker of William Pitt Sotheby's International Realty in Rowayton. 203-912-7061.

Visit cottagesgardens.com/news to start receiving our dailyDeeds newsletter

TOP RIGHT: MARCOTT STUDIOS; BOTTOM: RISE VISUAL